

**DAY Seventy-One Andover OH to Franklin Pennsylvania 78 km**

**Oct19 Friday D78.08 km M 43.5 A 15.4 T5h AT 8h total 5854.7km**

**Wind** Okay so the wind is from the east all morning so trees in every direction a wave of color.... Waving due to the a head wind and south east in pm... slow progress! 25mph wind gusts! The "color" is sort of like the "bloom" in

**Temp** Lovely warm 20C all day overcast with rain on and off all day Won't complain it is -5C in McLeod Valley Kelowna. Totally awesome.

**Road Condition** good US 322 had a nice shoulder and some fresh pavement

**Food: Breakfast** Just when we thought we were out of food.... Peanut butter wraps for breakfast!

**Lunch** Cochranon French Creek Café.... Baked potatoe was good.... Ken went with his grilled cheese audit! And Cherry Pie! Both didn't get more than a 5

**Supper** We ate in .... Veggie burgers, veggies and blue cheese dip

**Accommodation** Well we couldn't make it to Shipperville and we thought the campsite was closed there so we stopped in Franklin at a Comfort Inn.... Very nice with wifi

**Overall:** Well last evening after a walk under the stars I wrote down that I thought I need a day off.... Today pushing into the wind I know I need a day off! The fall colors are incredible. If you have not taken a trip during this time you should. It was great to look at the



We started off in the sprinkling rain... and wind.... Not raining enough to get wet, but enough to need a coat on. We stopped in Jamestown for plums for additional breakfast.... couldn't believe they could have had fruit at this time of year!





Amish home... can you see the buggy garage?

We saw a horse drawn cart coming racing down the road. We saw a lot of indication of Amish families in this area. Yesterday we saw the cutest little boy of about 5... I would have loved to take his picture. He had on a "bowler" type hat and dressed like a hillbilly with suspended pants and plaid shirt too big, pants drooping so so cute.

Also saw a fellow making fence rails by hand. Saw signs indicating leather belts and baskets for sale at farm gates. Also veggies.

The woman in the cart wasn't interested in a chat!

The buggy is supposed to be a symbol of a quiet life.... The way they race on the roads doesn't indicate that!



Barn stars still on almost every home.



## Franklin Day 71 – Oct 19 Franklin Hotel

0.0 Left Pymatuning State Park

Hwy 322 to Jamestown Left on Main, Rt on Jackson, Lt Shenongo St [3004]

Continued on 3004 to Adamsville

3004 to Cochranon Rd after crossed US 79 Cochranon [AS]

Old 322 to Hannasville should have stayed on new 322

78k US 322 to Franklin [AS]

Had a call to Karen. Gordon and Jenny are expecting on Nov 10. Karen is doing better. Will be starting treatment for breast cancer. She has an incredible attitude! Ken and I are bereft and she is moving on.



These birds are on almost every home also ? patriotic

USA flags also everywhere. Also signs: Support our Troops... stop the war.



This is the Chief of Polices bike in Cochranon. He said it is made by the Hummer car company for the troops in Iraq. He uses it to patrol the town.



Fall colors





**DAY Seventy-Two Franklin Pennsylvania to Brookville PA 79.22 km**

**Oct20 Saturday D 79.22 km M 46.8 A 14.6 T5h24 AT 8h total 5933.9km**

**Wind** not a factor today; slight tail wind

**Temp** beautiful sunny day 15C but the wind was cool

**Road Condition** Bike path from Franklin to Kossuth was great other than the portage up stairs to cross over rail bridge; Very hilly Not really hard grades, but up or down 5-8% short grades all day on 322 very tiring with small shoulder and traffic

**Food: Breakfast** included with hotel... had fruit and yogurt, bagels... lots of other stuff

**Lunch** picnic in Kossuth at the meat market!

**Supper** went out to a Buffet: salad bar and dessert bar

**Accommodation** Well second night with no camping within reasonable distance so we are in a Howard Johnston Hotel.... Will try to get off before 10am tomorrow as this morning we lazed around and then the day was very hard and long.

**Overall:** The bike trail was really a treat as it was a paved trail all along the Allegheny River. We could have gone all the way south on it, but we are going east so we had to carry the bikes up to the cross over rail line.... They need better signs and a ramp as I would have had to take the packs off, but my "Man Servant" was able to take Sarah up no problem.

Well can I say more about the HILLS! My legs aren't used to this! The downhills were fun! The trees continue to look oh so great. It's like someone painted the forest. They are falling as fast as they change color also. At one point it was like a snow storm of leaves. I thought we would never reach Shippenville with the continuous ups and downs. Might have to reconsider the gear if we are in for more of this. Need to get advise from my dental expert... teeth hurting. My bike is deciding to rebel... pedal bearings wearing out.

---

**4k South of Shippenville Brookville Day 72 – Oct 20 Rustic Acres CG Motel**

---

00 Depart Motel in Franklin 0.7 Turn LEFT (East) onto US-62 [US-322] 5k

---

5k Turn right onto Allegheny River Bike path after over the bridge over the river 10k

---

- 15 turn left on Sandy Cr Trail go up the stairs to train tressel bridge go away from the river 15k exit onto Hwy 322

---

- 32 Kossuth PA Hwy 322

---

- 52 Clarion PA Cross over I80

---

- 61 Corsica PA

---

- 74 Brookville Hwy 322 turn left go towards the I80 for Motel 8; Howard Johnston; etc ++ eating places 79k

---




Ken portaging my Sara from one rail bed to the Sandy Cr trail Looking back down the stairs



Railway Tressel



Tunnel on the bike trail





## DAY Seventy-Three Brookville to Clearfield PA 86.2 km

**Oct21 Sunday D 86.2 km M 46.6 A 13.8 T6h AT 9h total 6020.1km**

**Wind** NO WIND CAN YOU BELIEVE ME!

**Temp** beautiful sunny day 15C .... 25C by time we were in Clearfield @1630

**Road Condition** Beautiful shoulders most of the day on 322 with new pavement a lot of the way.... HILLS were the order of the day.....first 10k Up 8% 1mile then down 8% 1mile; up, down , up down..... second 10 k still up 6% down 6% but more winding and a little flat inbetween the up-down Went on and on all day like that tons...maybe 50+ motorcycles passed us on the roads today

**Food: Breakfast** none with the hotel so usual apples

**Lunch** stopped at a café for breakfast lunch... French toast for me- Ken had a pig out..toast, eggs and pancakes

**Supper** made a great spaghetti meal with the Kelly kettle with mushroom/pepper red sauce I have been craving usual food. We did see the most interesting pre made meals that heat themselves with a packet like we use to warm our hands at Big White.. not cheap... \$5 ea should feed 2. Were kind of heavy for hiking but would work for biking...I need to look for them again... they were in a truck stop. I suppose the truck driver would heat it while he drove.

**Accommodation** Woodland CG \$18 just ½ m off I80 is a really nice spot that has seasonal mostly closed up for the season..[Dec 21 last day] Nice shower/washrooms; laundry with microwave; games room with pool table. Really well kept up and clean. It is a Good Sam park. We might consider buying a membership for next years trip as you get a discount... they did discount up \$2 for being OLD.

**OVERALL:** I think we have been spoiled the last while as the hills are killing me! Well not exactly, but I am tired. Didn't help that a fellow spoke to Ken, while I was in the grocery store, and told him a different route to the campsite... so we listened and after going 3km out up hill! We flagged down a motorcyclist and he said "Your going the wrong way"... so we had to turn around .. down hill back to town but 6k out of our way.

We were thinking that for instance Brookville is a really neat heritage town... all closed up on Sundays and by 1630 every other day. If they stayed open even til 7pm they would get more business than they get probably in the am. Nothing much is open anywhere on Sundays other than groceries and gas stations... some cafés. So that brings me to Churches- United Methodist's are everywhere; saw a Pentocostal; Baptist; Church of Latterday Saints [Mormon} and JW in the last couple of days. Not many Catholic churches. Many churches turned into homes or businesses. We did see cars by the Methodist Church today, but not that many. Lots of people out mowing lawns and leaves, at the cafes, driving cars and motorcycles. No fishermen today. Did hear guns at one point. A few motorhomes on the road now. Looked at a realtors and was amazed how cheap homes are in this area.\$189thou got a 4BR totally remodeled nice looking home in Brookville; \$95thou gets you a neat Victorian home with fireplace, hardwood floors + 2 one bedroom apt. over the garage! We picked up a leaflet in the café and it described the demographics of the area... 50% of the pop is under 50 which is what we have seen. Lots and lots of working age folks.... Doing what we aren't sure. Not a lot of

grey hairs like me. Lots of babes too. Nice to see. Also the housing and small towns seemed to be all along 322 all day. Lots of new mobile homes... sort of wonder what they will look like in 20 years. Lots of old home remodeled.

**Clearfield Day 73 – Oct 21 Woodland CG 86K**

0.0 Depart motel in Brookville rt

2k Left on 322 20k HILLY

40k Dubois [AS]

66k Clearfield [AS]

Cross the river go Left on US 322

82 Turn LEFT (North) onto SR-970 3.5 km

86 Turn RIGHT (East) onto T613 0.7 km

86.2 Arrive Woodland CG [woodlandpa@pennswoods.net](mailto:woodlandpa@pennswoods.net) 1-800-589-1674 open until Dec 21/07



## DAY Seventy-Four Clearfield PA to Fort Bellefonte 80 km

**Oct22 Monday D79.92 km M44.9 A 14.5 T5h29 AT 9h total 6100.1km**

**Wind** It was so hilly I can't remember any wind! It wasn't behind me I know that... although a guy full of hot air is

**Temp** Lovely.... 0C in am with frost on the roof tops; +15 all day once the frost melted! Is swim suit top... need a new one this one is either stretching or I'm shrinking!

**Road Condition** Well up hill up hill and down hill down hill great down hill into Port Matilda and then an unexpected up up up to 550 turn-off then it was a great down hill ride with sharp ups but snuck thru the hills to Bellefonte town...

This town is extremely hilly I can't compare it to maybe north on the St Lawrence either up 8% or down but no flat

**Food: Breakfast** apples, jam sands... Ken didn't get his fix of pancakes later as past breakfast being served

**Lunch** Picnic at a rest area that could pass for a camp spot before Port Matilda

**Supper** Excellent if I way say so... beans with veggie meatballs and mashed potatoes We are getting really good with the Kelly Kettle

**Accommodation:** Fort Bellefonte Happy Valley CG is very nice. Showers great with heaters! Open until Nov 5 only Has Wifi and is a Good Sam Park A little expensive @\$27.50 but gave us a deal \$24.75 Must look into a Good Sam membership for next year

**Overall:** Well another day that I am very tired. I know knowone I know would HONK just as they pass a cyclist, but today I had "cycle-road rage" as a 18 wheeler Held down the horn as he zoomed as close to me as possible! Just plain stupid when the shoulder is only 2Ft wide!


Anyways overall everyone is really good. Lots of dump trucks on the road today for ? reason. Bellefonte would be a neat place to wander around, but too far out in the campground. Very hilly town. Neat old homes mostly restored or kept up. Good grocery too... with great veggie choices. The campsite is off I80 so we had a little trouble getting to it as the Hwy 26 said motorized vehicles only [ I80 wasn't a choice], well I have a motor .... It's human powered! We only had to go a couple 2k up to get under I80 to the turn off to the CG.

Had Wifi in the camp so sat again in a strange computer room... the laundry ... so did our wash and computed.

Looking ahead we are finding that the campsites are closing rapidly... have the next week arranged with a great stay in Harrisburg planned for 2 nights... 2 warm showers... can you believe people are so good.

Fellow told us just now his tent trailer was "nugged" last night by a 400 lb bear! Gee would have been nice if the person checking us in had mentioned that! We quickly removed all food items to the laundry. No scat seen anywhere.

### Fort Bellefonte (State College) Day 74 – Oct 22 Fort Bellefonte CG 75.0 K

0.0	Depart Woodland CG on T613 (South)	0.7 km	
0.2	Turn LEFT (North) onto SR-153 [SR-879]	0.4 km	
4.1	Turn LEFT (East) onto US-322 [28th Division Hwy]	16.1 km	Graham town ? facilities
20.2	Bear LEFT (East) onto 28th Division Hwy [N Front St]	0.3 km	Chester Hill town
20.5	Continue (East) on SR-53 [28th Division Hwy]	0.2 km	
20.7	Continue (East) on US-322 [SR-53]	20.4 km	
41.1	Turn LEFT (North-East) onto US-220 [US-322]	4.4 km	Port Matilda town
45.5	Bear RIGHT (East) onto US-322	5.2 km	Going thru State College town  x2
50.6	Bear LEFT (East) onto SR-550 [Buffalo Run Rd]	16.9 km	
67.5	Continue (East) on SR-550 [Water St]	0.9 km	
68.5	Bear LEFT (North-East) onto SR-150 [SR-550]	0.5 km	
69.0	Continue (North-East) on SR-150 [S Water St]	0.3 km	Bellefont town AS



69.3	Bear RIGHT (East) onto W High St 80 m	
69.4	Turn LEFT (North) onto SR-144 [N Spring St]	0.1 km
69.6	Turn RIGHT (East) onto SR-144 [W Howard St]	0.1 km
69.7	Continue (East) on E Howard St	1.4 km
71.1	Continue (East) on Jacksonville Rd	0.4 km
71.5	Continue (North-East) on SR-1008 [Jacksonville Rd]	3.1 km which is Hwy 26
74.7	Continue (East) on Jacksonville Rd 0.3 km Arrive Fort Bellefonte CG	right on I 80 exit 24 has Wifi Good Sam



Cute little general store right on the road

## DAY Seventy-Five Fort Bellefonte to Lewistown 85 km

**Oct23 Tuesday D85.32km M48.1 A 14.2 T5h58 AT 9h total 6185.5km**

**Wind** Raining from the start of the day with a lot of head wind thrown in for fun

**Temp** warm 20C so a sauna inside my rain coat

**Road Condition** Good shoulder most of the way especially on US 322 where motorized vehicles only can go!

**Food: Breakfast** grapes and apples; cottage cheese.... Full meal deal

**Lunch** stopped at a really quaint sandwich shop that we came in as 2 drowned rats

**Supper** Well arrived at the campsite to no store close by so PB/jam sands and nuts made up supper

**Accommodation:** Locust CG \$15 is another yearly spot that takes nightly but mostly closed for the season Has wifi

**Overall:** Very tough day once more with lots of short steep pitches. Coming down into Milroy was great as we ended up on the major hiway and had a 3.5mile 8% downhill ride.... Breaks on as wet wet road surface, but still going 48km/h The towns just seem to be one right after the other




---

### Lewistown PA Day 75 – Oct 23 Locust CG 85k

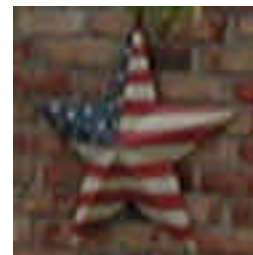
---

0.0	Depart Fort Bellefonte CG on Jacksonville Rd (East)	40 m	0.1 Turn RIGHT (South-West) onto SR-26
0.4	Turn LEFT (South-East) onto Musser Ln	2.7 km	
3.0	Turn RIGHT (West) onto SR-550 [Zion Rd]	0.2 km	
3.3	Bear LEFT (South) onto Lutz Rd	1.0 km	
4.3	Bear LEFT (South-East) onto Airport Rd	0.6 km	
4.9	Continue (East) on Garrick Rd [Garbrick Rd]	2.5 km	
7.4	Bear RIGHT (South) onto SR-64 [E College Ave]	2.4 km	
9.7	Continue (West) on SR-26 [E College Ave]	2.6 km	
12.4	Bear RIGHT (West) onto SR-26 [W College Ave]	3.4 km	
15.8	Continue (South-West) on SR-26 [E College Ave]	9.3 km	cross over 322 divided
25.1	Continue (South-West) on SR-26 [W College Ave]	0.4 km	<b>State College (AS)</b>
25.5	Turn LEFT (South-East) onto US-322 [S Atherton St]	5.7 km	
31.2	Continue (East) on SR-45 [US-322]	1.2 km	
32.5	Continue (East) on US-322 [Boal Ave]	1.0 km	
33.5	Bear RIGHT (East) onto US-322 [E Boal Ave]	23.4 km	Seven Mt CG// Keams CG

---



56.8	Exit on Old US-322 (East)	6.9 km	<b>Milroy (??)</b>
63.7	Continue (South) on Teo Creek Rd	1.3 km	
65.0	Bear LEFT (South-East) onto Main St	1.1 km	<b>Reedsville (AS)</b>
66.2	Continue (South) on Manns Narrows	1.0 km	Amish area lots to see and do
67.2	Continue (South) on (N) Main St	2.0 km	<b>Yeagertown</b>
69.2	Bear LEFT (South-East) onto (S) Main St [Boiling Springs Rd]	0.3 km	
69.5	Continue (South-East) on (N) Logan Blvd	2.0 km	
71.5	Bear RIGHT (South) onto Electric Ave	1.3 km	cross over new 322
72.7	At US-322 SR-103 Exit, continue (South) on SR-103 [Valley St]	1.6 km	
74.3	Bear RIGHT (South-West) onto SR-103 [E Market St]	0.3 km	<b>Lewistown</b>
75.0	Bear RIGHT (West) onto US-22 [US-522]	4.2 km	Pines Motel
79.2	Bear LEFT (South) onto Industrial Park Rd	1.6 km	[area in construction so route may change]
80.8	Bear RIGHT (South-East) onto Locust Rd	1.6 km	82.4 Turn LEFT (North) onto Mainline Rd 80 m
82.5	Turn LEFT (West) onto Local road(s)	40 m	Arrive Locust CG 717-248-3973 open all yr



**DAY Seventy-Six Lewistown to Duncanon 92.07 km**

**Oct24 Wednesday D92.07km M45.1 A15.8 T5h47 AT 7.5h total 6277.5 km**

**Wind** minimal with a few gusts

**Temp** Drizzling rain all day from the start to finish with occasional breaks.

**Road Condition** HILLS HILLS 12% to 7% and back again the roads were pretty good with some shoulder but lots of traffic. We spent a while out on US 322 that states **MOTORIZED VEHICLES ONLY...** found out later they do give tickets, but there was no other way to go to our campsite... ended up closed.

**Food: Breakfast** all the left overs

**Lunch** stopped in Mifflintown for Hoagies

**Supper** the worst PIZZA ever! Too loose Ken liked it Stopped for a beer in the old hotel we are in



Doyle Hotel in Duncanon



These globes are all across the states in gardens/yards.

**Accommodation:** Well who would think that in the USA you couldn't find a hotel of any star even minus! We planned to stay at Pittman's Riverside CG which had cabins making the day 65km but they were closed and he would have let us stay but his waterlines were blown out so no washrooms. The state park [Little Buffalo] in Newport was closed so we continued on to New Bloomfield and the B&B was full so on to Duncanon Doyle Hotel which is only really open for hikers on the Apalacian Trail.... They are the only ones hard up enough... no it is a really neat old hotel that they are working on restoring. The

room was clean... BR down the hall needed a woman's touch, but was okay. Not a recommended \* hotel. These were neat Tables made from old treddle sewing machines.



Doors into ball room



**Overall:** Rained all night hard. Our tent was very wet when we packed up. Ken discovered a broken spoke this morning so delayed start as he fixed that.... 10am finally off and pedaling. Note on Ken's stature.... His pants look like they are for an old grandpa... oh he is a grandpa... they are falling off him and they are cycling spandex pants! He will need to gain a little I think when home.



Hills of Pennsylvania

Amish people seen on the street with 2 wheeled horse drawn cart but no picture... raining! Lots of horse dung on the road too. Lots of homes all along the route which we thought was going to be countryside. Lots of "Auntie Thalia" types with keeping everything syndrome. No other cyclists.

We start out on the west side of Juniata River on a really hilly road 333 One 12% was the first push I have done in over 6000km, but I didn't expect it and didn't gear down... Ken charged up it! Oh well. Rest of the hills a little less grade but "sharp" ups and downs all day. We were really disappointed to reach the campsite to find the manager there but the site closed. Went on to Newport... strange name for a land locked town... anyways State Park closed, B&B closed... some owners of a funky coffee shop helped us phone around to other B&B's but no openings so phone the Hotel Doyle and they were happy to have us. It is a Grand old place but they obviously don't have the \$ to fix it up. They have had it 6yrs and the pub is done up good and some ball rooms where weddings are held. They have 4 permanent renters... young fellows, but the rooms need referbing Only one plug-in in our room. The windows are "unstable" in their words so operate at your own risk. Neat rounded windows will cost a fortune to replace some day... single pain so I'm sure really cold in winter. There is a gas heater in each room! Many of the towns are restored... Newport for one had a lot of funky shops, Duncanon is a gold mine waiting to be discovered. Lots of young working people. Area seems less affluent by the state of the homes and the dress. Waitress wearing jeans and sweat shirt sort of sloppy looking. Seems to be no smoking restrictions... smoking by patrons and the cooks inside the restaurants.

5k West of Newport PA Day 76 – Oct 24 ~~Pittman's Riverside CG~~ —Hotel Doyle in Duncanon

<b>0.0</b>	<b>Depart Locust CG on Local road(s) (East)</b>	<b>40 m</b>		
0.1	Turn RIGHT (South) onto Mainline Rd	70 m	Turn RIGHT (North-West) onto Locust Rd	1.6 km
1.7	Bear LEFT (West) onto Industrial Park Rd	1.6 km		
3.3	Bear RIGHT (North-East) onto US-22 [US-522 S]	4.2 km	Belle Ave Bridge	
7.5	Turn RIGHT (South) onto SR-103 [SR-103 N]	2.1 km		
9.5	Stay on SR-333 [Hawstone Rd] (East)	19.5 km		
28.9	Bear LEFT (East) onto SR-333 [Valley St]	0.3 km	29.2 Continue (South) on SR-333 [Mowery St]	0.1 km
29.3	At 189 SR-333, <b>Mifflin, PA</b> 17058, continue (South) on SR-35 [SR-333]	1.3 km		

30.6	Bear LEFT (South) onto SR-333	4.7 km	
35.3	At SR-333, <b>Port Royal, PA</b> 17082, turn RIGHT (South) onto SR-75 [SR-333]	17.8 km	
53.1	Bear RIGHT (East) onto SR-333 [Mill St]	0.2 km	
53.3	Bear RIGHT (East) onto SR-333 [William Penn Hwy]	2.6 km	
55.9	Bear LEFT (East) onto Pfoust Valley Rd	0.2 km	[we are on Old 22 for all but 1.0KM not on Major for 6.0KM]
56.1	Bear RIGHT (East) onto US-22 [US-322]	6.0 km	
62.1	At US-22 Market St Exit, bear RIGHT (South) onto Market St	2.7 km	64.8kArrive Pittman's Riverside CG <b>CLOSED</b>
	<b>Depart Pittman's Riverside CG on Market St (South)</b>	<b>2.6 km</b>	<b>Little Buffalo State Pk {CLOSED}</b>
	Bear RIGHT (South) onto William Penn Hwy [LR275]	2.4 km	New Bloomfield Tressler House B&B [Full]
	<b>Turn RIGHT (South-West) onto SR-34 [Market St]</b>	<b>6 km</b>	
94k	Continued on to Duncanon to the Royal Hotel..... not so royal! But a roof over ones head.		



Numerous neat log homes along the way

Maybe right **sharp** up hill!



Harrisburg MD



## DAY Seventy-Seven Duncanon to Camp Hill [Harrisburg ] 31.90km

Oct25 Thursday D31.90km M39.5 A15.3 T2h05 AT 4h total 6309.4 km

**Wind** NONE

**Temp** Overcaste

**Road Condition** very busy sections with no shoulder; at start US 11/15 stated motorized vehicles only but shortly it was 35mph and decent shoulder thru suburbia

**Food: Breakfast** restaurant: Ken you guessed it 2 eggs 2 pancakes and toast; me French toast

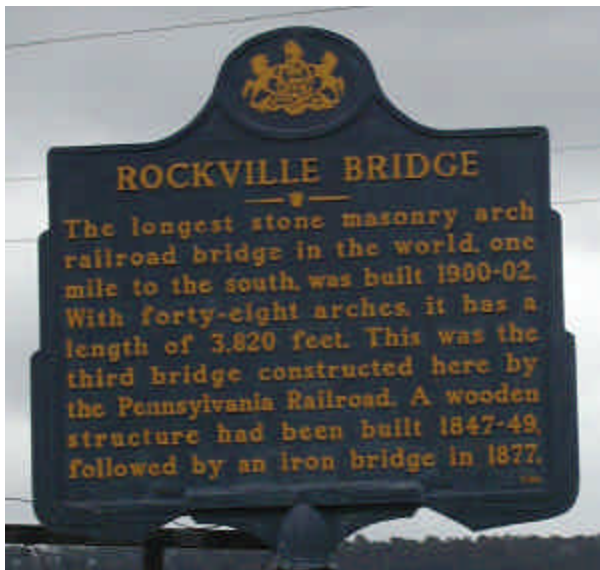
**Lunch** stopped at Wendy's first time ever.... Salad was good

**Supper** the best : a home cooked meal with salad, rice, nuggets; really good Amish cheese with fruits/wine

**Accommodation:** Well we had contacted a warmshowers for tonight and as they were away tonight, they set us up with Jeff and Joan McPartland's in Camp Hill. Wonderful family who opened their home to us. Lovely area. You wouldn't know they live in suburbia when you look out on the lovely garden with pond and forest of trees. He has been and still is an avid cyclist and has been touring all over alone and with family. A wealth of information. Also worked for IBM so Ken and he had a lot in common. Joan is retiring next month. Transitions.

Angels along our way for sure.

**Overall:** Well after yesterday it was nice to have a dryer day. Actually now I'm back into the hills I don't mind them, in fact kind of like the work out up and the glide down. Joan hasn't caught the bug and says "It's one she's not catching" It definitely is infectious cycle touring. We had a very short day due to our troubles in accommodation yesterday so a bonus. Feels like an extra day off which I need. Clothes washed, well fed, roof over our heads: life is good.





Jeff and Joan McPartland



Ken and I



Owen and Fran Moore

## DAY Seventy-Eight Lemoyne PA[Harrisburg ] by car

Oct26 Friday D0km total 6309.4 km

**Wind** NONE

**Temp** Raining hard all day

**Road Condition** very nice to get a ride to Owen and Fran Moore's as it is up hill!

**Food: Breakfast** at the Owens They really put on a spread for us..... I can just see my fat cells filling up!

**Lunch** Very yummy lentil soup

**Supper** A spaghetti feed

**Accommodation:** we moved over to the Owens for a rest day which is really nice. They have a wonderful "sun" room.... I'm sure the sun does shine here..... they use more than the rest of the house in the summer. Really really nice and they gave it over to us! I don't know if I will be as good a host as either of these 2 families, but I will try.

**Overall:** Just a day to kick back. We went to the "farmers Market" and enjoyed all the sights, smells and yummys they had to offer. Tried my first "soft Pretzel", Owen picked up "baked porridge" to try... It was really good... kind of like the base for Matrimonial cake [date squares] with raisins. Will look for a recipe.

We talked and talked cycling. He and a friend cycled across the mid tier route in 2000 just after he retired. Looks like the route Ken and I would like to take back from Florida, or at least in part, next spring. He gave us a contact, Wayne from his cycle group who has done both the lower and mid tier so this may help us with the trip next spring.

They have a daughter Lynda, in Reddeman [by Seattle at the Microsoft Campus] so maybe they will come to see BC some day. Fran [68] does not cycle but what a WARM SHOWERS HOST! They have been hosts for over 10 years. She has recovered well from a stroke and is a great cook! They have 2 cats [Tig and her brother] who rule the roost and are very friendly.

They are very involved in the refuge work with The Boys from Sudan. This is it in a nut shell. There were 35 young boys who the USA and sponsors settled in Harrisburg, that were orphaned due to the war as very young children. I don't know what the extent of the program is as to how many were settled in the USA totally, but Owen and Fran thru their Church and the community, have been very instrumental in helping these now young men to become active



participants in the community and to settle in to life in American. They are really "Angels" to these boys I'm sure. The stories were so very interesting and they can be very proud of this achievement. She described them as having "black velvet skin" and the pictures are after they have been here a while, but they appear like athletic smiling gentle giants.



## John Harris Sr. Grave Site



Here lies John Harris Sr., father of the founder of the City of Harrisburg, who emigrated from Yorkshire, England in the early 18th Century to share in the opportunities of William Penn's new world. First locating in Philadelphia, Harris made his living by removing tree stumps to open new streets in that city. There, through his friendship with Edward Shippen, Esq., first mayor of Philadelphia, he met his wife-to-be, Esther Say. The Harrises moved to Chester County and then to Bainbridge, Lancaster County. His desire to venture farther into the frontier brought them circa. 1717 to this place, that of the present-day Harrisburg. Harris built a home several hundred feet south of this gravesite, traded with the "Indians," cultivated the soil and established his river-crossing ferry. In 1733, he took possession of 800 acres of lands granted to him by the Penn Family which would become the original Borough of Harrisburg. That year thus officially established Harris' interests at this site. Of particular note is the tale, reported in 1828 by Robert Harris, grandson of Harris Sr., that a band of unfriendly "Indians" happened upon Harris Sr.'s establishment requesting whiskey that Harris refused to provide them. In anger, they tied Harris to a nearby mulberry tree with the intent of burning him alive. An African American slave named Hercules, it was reported, was able to rouse nearby friendly Indians who came to Harris' rescue. So grateful was Harris that he immediately emancipated Hercules and, in doing so, proclaimed his intent of being buried beneath the famed mulberry tree, his direction being fulfilled in 1748.



Early illustration depicting the tale of John Harris Sr.'s rescue from being burned at the Mulberry Tree.



1890 view of John Harris Sr. Grave site showing stumps of what is thought to be the famed Mulberry Tree later washed away in the Flood of 1862.



# John Harris/Simon Cameron Mansion



Here is situated the stone residence of John Harris Jr. (1727-1791), the founder of Harrisburg, which he erected at the end of the French and Indian War in 1766. In 1785, the Borough of Harrisburg was laid out in the house's front parlor by Harris and his son-in-law, William Maclay. Upon Harris' death, the house passed to his sons, first to David Harris and then to Robert in 1805 who resided there until 1835 when it was sold to Thomas Elder, a local attorney. After Elder's death in 1853, the house was used by Reverend Beverly Waugh as the Pennsylvania Female College. Civil War turmoil and Waugh's death in 1861 forced the College into bankruptcy. College board member Simon Cameron, President Lincoln's first Secretary of War and organizer of one of the most powerful political machines in U.S. history, acquired the property in 1863 for use as his home. While traveling through Europe during his tenure as Lincoln's Minister to Russia, after being War Secretary, he acquired many fine furnishings for the house including 14-foot high pier mirrors from France, the installation of which resulted in lowering the home's first floor by three feet for sufficient ceiling clearance. Upon Cameron's death in 1889, the house was passed to his daughter, Margaretta Haldeman and then in 1915 to her son, Richard. His death in 1933 ended the home's use as a private residence. In 1941, Haldeman's sister donated the house to the Historical Society of Dauphin County, which has since maintained the property as a museum featuring rare antiques, significant 19th Century furnishings, and archives of the nation's, Harrisburg's and Dauphin County's rich heritage.



1855 depiction of the John Harris Mansion prior to its acquisition by Simon Cameron.



1885 view of the Mansion showing pier mirrors from France.

The Harrisburg History Project Commissioned by Mayor Stephen R. Bond





## DAY Seventy-Nine Lemoyne PA[Harrisburg ] to Airville 82km

**Oct27 Saturday D82.18km M 46.9 A 15 T 5h27 AT6h45 total 6391.6 km**

**Wind** some from the north east Road meanders so not much of an influence, but didn't hold us up

**Temp** Cool cloudy.... Rained all morning but we left after 1030 so dry all day!

**Road Condition** Great route that Ken and Owen worked on. Mostly flat! Until we turned across the river to the west and headed down toward the campgrounds.. nothing "undoable"

**Food: Breakfast** at the Owens We had Corn Pancakes....{Jiffy corn Muffin Mix} very good Fran said her mother used to make them from scratch of course but this was a quick method.... I will see if we have this mix at home Really yummy!

### Lunch

**Supper** cold after the kettle blew.

**Accommodation:** Otter Creek CG Well the internet said closed on Oct 15 but still open having a Halloween party.

**Overall:** A really good ride down the east side of the river then a cross over to a bit hillier ride to a surprise that the Campsite was still open.

I had a lesson on using a Kelly kettle. It was getting dark by the time we started the kettle. I had put the cork in to prevent spillage and left it in as it heated. When I notice the kettle was leaking I went to remove the cork and the kettle "blew" all the heated water into my face and hit Ken who was standing behind me. The water was not boiling yet which was lucky as my face was only scalded. This could have been a lot worse so anyone else with a kettle be careful! It is a great stove but I learned it can be dangerous.

Km	Instruction	For
0.0	Depart 4404 Carlisle Pike, Camp Hill, PA 17011 on Carlisle Pike [Market St] (East)	2.0 km
2.0	Continue (East) on Market St	3.6km
5.7	Bear RIGHT (South-East) onto S 3rd St	1.1 km
6.8	Bear RIGHT (South-East) onto Bridge St	2.7 km
9.6	At 103 Old York Rd, New Cumberland, PA 17070, stay on Old York Rd (South)	7.3 km
16.3	Bear LEFT (East) onto SR-262 [Valley Rd]	8.4 km
24.6	Bear LEFT (East) onto SR-262 [E Broadway]	0.5 km
25.1	Turn RIGHT (South) onto SR-262 [S York St]	0.7 km
25.8	Continue (South) on SR-262 [Cly Rd]	3.3 km
29.1	Bear LEFT (East) onto River Dr	1.6 km
30.7	Bear RIGHT (South-East) onto Pennsylvania Ave	0.5 km
31.2	Bear LEFT (North-East) onto Landvale St	0.2 km
31.4	Bear RIGHT (East) onto Locust St	0.7 km
32.1	Continue (South) on Wago Rd	2.7 km
34.8	Bear LEFT (South) onto Gut Rd	3.2 km
38.0	Turn LEFT (South-East) onto 2nd St	0.2 km
38.2	Continue (South-East) on Riverview Dr	2.8 km
41.0	Turn LEFT (South) onto Furnace Rd	9 km
50.0	Bear RIGHT (East) onto Hauser School Rd	1.0 km
51.0	Bear RIGHT (South-East) onto Dark Hollow Rd	0.7 km
51.7	Bear RIGHT (South-East) onto Blessing Rd [Cool Springs Rd]	1.7 km
53.4	Continue (South-East) on (N) 9th St	0.3 km
53.7	Turn LEFT (East) onto SR-462 [Hellam St]	1.0 km
54.7	turn RIGHT (South) onto S 2nd St	0.2 km
54.9	turn LEFT (East) onto Orange St	0.2 km
55.1	<b>Wrightsville, PA</b> turn RIGHT (South) onto SR-624 [S Front St]	1.2 km
56.3	Bear RIGHT (South) onto SR-624 [Long Level Rd]	6.9 km
63.3	Continue (South-East) on Bull Run Ramp Rd onto Bull Run Rd	1.5 km

- 64.8 bear LEFT (South) onto Pleasant Hill Rd 1.4 km
- 66.2 Bear LEFT (South) onto SR-425 [Craley Rd] 3.9 km
- 70.1 Turn LEFT (East) onto SR-425 [Burkholder Rd] 11.2 km
- 81.3 Arrive Otter Creek CG

We both can remember when this nuclear accident occurred in 1979. The houses on the land are inhabited by families with children and pets and they don't seem concerned living in this area. I sure would be.



Three Mile Island



Goats seem healthy there



Well you must remember we are only seeing a bike tire width of each state so :

**P**ouring rains

**E**ndless Trees

**N**uts of all shapes and sizes

**N**ice rail bed trails

**S**quirrels; **S**moking everywhere

**Y**es more hills

**L**ots of different churches

Ri **V**ers and creeks

**A**mish

**N**umnerous religious signs

**I**ndustry; **H**ILLS

**A**ppilachian Mountains